

# Madina Academy

We raise children. Higher.

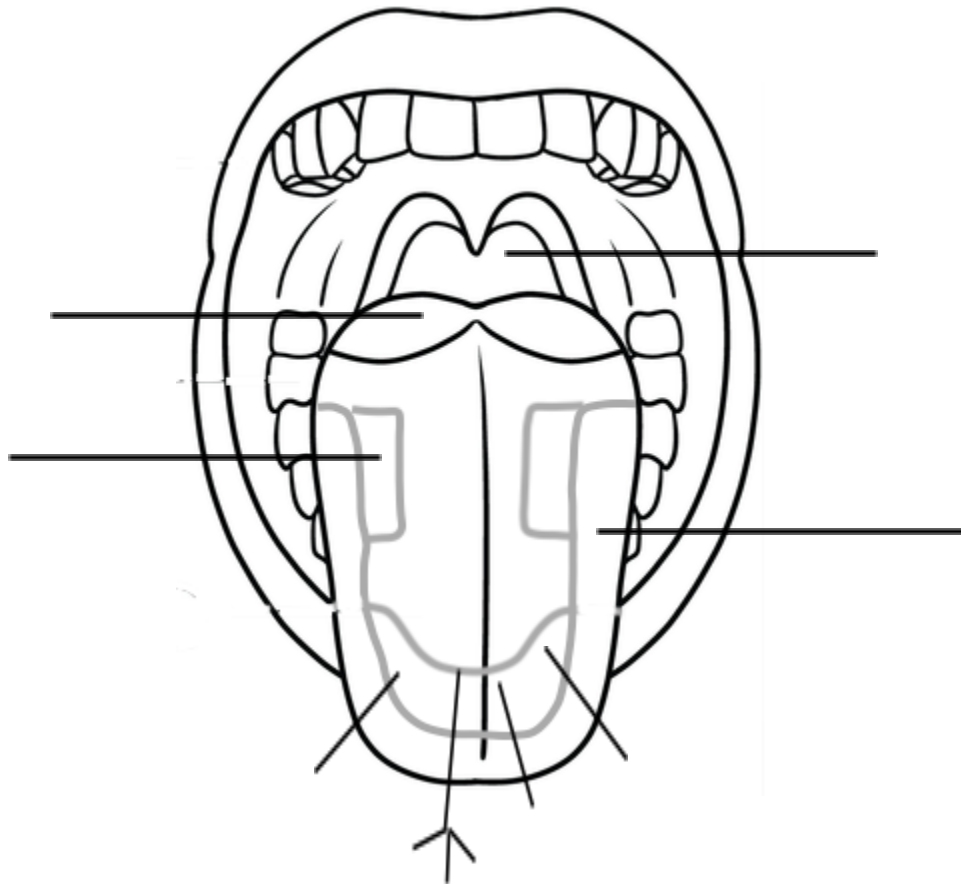
*Middle School  
Qur'anic Studies*

*Summer Packet*

# Qur'ānic Studies Summer Packet

## 1- Answer the following questions:

- a) Name the Ikhfā' Letters: \_\_\_\_\_
- b) What are the Idghām Letters? \_\_\_\_\_
- c) Write the letters of Articulation from the Tongue; remember to color code each area: [18 Letters in total]



2- Find all the Meem Sākinah Rules; BOX THE TRICKY ONE:

Idghām Shafawi (3)

Ikhfā' Shafawi (2)

Ith-hār Shafawi (6)

(DO NOT LINK the Ayahs)

وَذَالِكُمْ ظَنُّكُمُ الَّذِي ظَنَنْتُمْ بِرَبِّكُمْ أَرَدْتُمْ أَنْ تُصَبِّحْتُمْ مِنْ

الْخَاسِرِينَ ﴿٢٣﴾

وَضَلَّ عَنْهُمْ مَّا كَانُوا يُدْعُونَ مِنْ قَبْلُ وَظَنُوا مَا لَهُمْ مِنْ نَجِيسٍ ﴿٤٨﴾

حَتَّىٰ إِذَا مَا جَاءُوهَا شَهِدَ عَلَيْهِمْ سَمْعُهُمْ وَأَبْصَرُهُمْ وَجُلُودُهُمْ بِمَا كَانُوا

يَعْمَلُونَ ﴿٢٠﴾

3- Underline the examples of Same Idghām (Idghām Mutamathilayn):

[Total = 5]

أَذْهَبَ بِكِتَابِي هَذَا فَأَلْقَاهُ إِلَيْهِمْ ثُمَّ تَوَلَّىٰ عَنْهُمْ فَانظُرْ مَاذَا

يَرْجِعُونَ ﴿٢٨﴾

أَسْتَجِيبُوا لِرَبِّكُمْ مِنْ قَبْلِ أَنْ يَأْتِيَ يَوْمٌ لَا مَرَدَّ لَهُ مِنَ اللَّهِ مَا

لَكُمْ مِنْ مَلْجَأٍ يَوْمَئِذٍ وَمَا لَكُمْ مِنْ نَكِيرٍ ﴿٤٧﴾

#### 4- Find all the Noon Sākinah and Tanween Rules:

Idghām (6) , Iqlāb (2) , Ith-haar (2) , Ikhfā' (4) :

(DO NOT LINK the Ayahs)

وَمَنْ يُضْلِلِ اللَّهُ فَمَا لَهُ مِنْ وَليٍّ مِّنْ بَعْدِهِ ۗ وَتَرَى الظَّالِمِينَ لَمَّا رَأَوْهُ  
الْعَذَابَ يَقُولُونَ هَلْ إِلَىٰ مَرَدٍّ مِّنْ سَبِيلِ ﴿٤٤﴾  
فَانْطَلَقَا حَتَّىٰ إِذَا لَقِيَا غُلَامًا فَقَالَتْ قَالَ أَقْنَتِ نَفْسًا زَكِيَّةً بِغَيْرِ نَفْسٍ  
لَّقَدْ جِئْتَ شَيْئًا نُكْرًا ﴿٧٤﴾

إِنَّ السَّاعَةَ آتِيَةٌ أَكَادُ أَخْفِيهَا لِتُجْزَىٰ كُلُّ نَفْسٍ بِمَا تَسْعَىٰ ﴿١٥﴾

#### 5- Circle the correct answer:

1) The rule in **بِنَبَأَيْقِينَ** is called:

- a) Complete Idghām without Ghunnah
- b) Ikhfā' Shafawi
- c) Incomplete Idghām with Ghunnah
- d) Iqlāb

2) The kind of Idghām in **غَفُورٌ رَّحِيمٌ** is called:

- a) Idghām Mutamathilayn (Same Letter)
- b) Idghām Mutajanisayn (Similar Letter)
- c) Idghām of Noon Sākinah and Tanween Rules
- d) a+c

3) The reason why in **مِنَ الدَّنِّ** the Noon is merged into Laam is:

- a) They are Same in Articulation
- b) They are Similar in Articulation
- c) Laam is one of the letters of Idghām
- d) b+c

4) The rule in **أَمْرٌ مِّنْ قَبْلِكُمْ** is called:

- a) Idghām Shafawi
- b) Iqlāb
- c) Idghām with Ghunnah
- d) Ikhfā' Shafawi

**6- Name these examples as Heavy Laam and Light Laam:**

مِنَ عِنْدِ اللَّهِ

وَمَا عِنْدَ اللَّهِ خَيْرٌ

لِسَانٌ

أَخَافُ اللَّهَ

فَلْيَتَوَكَّلْ

7) Find all the examples for each of the following Rules NST & Medd:

Color Code: NST - Green, Medd - Orange

- A) NST - Iqlāb (1)
- B) NST - Ith-hār (1)
- C) NST - Ikhfā' (3)
- D) Leen Medd (1)
- E) Separate Allowed (3)
- F) Exchange Medd (1)

The Stop Sign (.' .') means:

---

وَإِذْ أَخَذَ رَبُّكَ مِنْ بَنِي آدَمَ مِنْ ظُهُورِهِمْ ذُرِّيَّتَهُمْ وَأَشْهَدَهُمْ عَلَىٰ  
أَنفُسِهِمْ أَلَسْتُ بِرَبِّكُمْ قَالُوا بَلَىٰ شَهِدْنَا أَن تَقُولُوا يَوْمَ الْقِيَامَةِ إِنَّا  
كُنَّا عَنْ هَذَا غَافِلِينَ



8) Fill in the blanks with the correct answer from the words below:

two Whistle merge three Throat six  
hide end Tongue Same

1- In Arabic, the meaning of Idghaam is to \_\_\_\_\_, and Ikhfaa' means to \_\_\_\_\_.

2- In the Noon Sakinah and Tanween Rules, the Ith-haar Letters are also called the \_\_\_\_\_ Letters.

3- The letters ( ز س ص ) are called the \_\_\_\_\_ Letters, which come from the \_\_\_\_\_.

4- The Compulsory Heavy Medd in a Word and Letter has \_\_\_\_\_ Vowel Counts, while the Compulsory Light Medd in a Word and Letter has \_\_\_\_\_ Vowel Counts .

5- There are \_\_\_\_\_ levels of Qalqalah, one of which only occurs when you stop at the word.

6- Another name for Idghaam Shafawi is \_\_\_\_\_ Idghaam.

### 9) Find all the examples of the following Medd Rules:

**Color Code: 2 Vowel Counts - Blue**

**(4, 5, 6) Vowel Counts - Red**

A) Greater Connecting (1)

B) Lesser Connecting (1)

C) Natural Medd (7)

D) Leen Medd (4)

E) Separate Allowed (1)

F) Required Attached (1)

G) Medd with Presented Sukoon (8)

The Stop Signs mean:

( لا ) \_\_\_\_\_

( صل ) \_\_\_\_\_

( ج ) \_\_\_\_\_

وَأَذِّنْ مِنْ اللَّهِ وَرَسُولِهِ إِلَى النَّاسِ يَوْمَ الْحَجِّ الْأَكْبَرِ أَنَّ اللَّهَ  
بَرِيءٌ مِّنَ الْمُشْرِكِينَ وَرَسُولُهُ فَإِنْ تُبْتُمْ فَهُوَ خَيْرٌ لَّكُمْ وَإِنْ  
تَوَلَّيْتُمْ فَأَعْلَمُوا أَنَّكُمْ غَيْرُ مُعْجِزِي اللَّهِ وَبَشِّرِ الَّذِينَ كَفَرُوا  
بِعَذَابٍ أَلِيمٍ



10) Find all the examples for each of the following Rules  
(Medd and Letter Articulation):

Color Code: NST - Green  
Medd - Red

- A) Separate Allowed (1)
- B) Required Attached (1)
- C) Similar Idghaam (2)
- D) Near Idghaam (4)
- E) Close Idghaam (2)
- F) Exchange Medd (1)

The Stop Sign means:

---

يَا أَيُّهَا الَّذِينَ ءَامَنُوا كُونُوا أَنصَارَ اللَّهِ كَمَا قَالَ عِيسَى ابْنُ مَرْيَمَ لِلْحَوَارِيِّينَ  
مَنْ أَنصَارِي إِلَى اللَّهِ قَالَ الْحَوَارِيُّونَ نَحْنُ أَنصَارُ اللَّهِ فَأَمَّا تَطَائِفَةٌ مِّنْ  
بَنِي إِسْرَائِيلَ وَكَفَرَت طَّائِفَةٌ فَأَيَّدْنَا الَّذِينَ ءَامَنُوا عَلَىٰ عَدُوِّهِمْ فَأَصْبَحُوا

ظَاهِرِينَ ١٤

